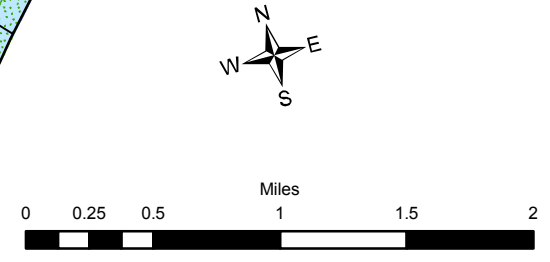
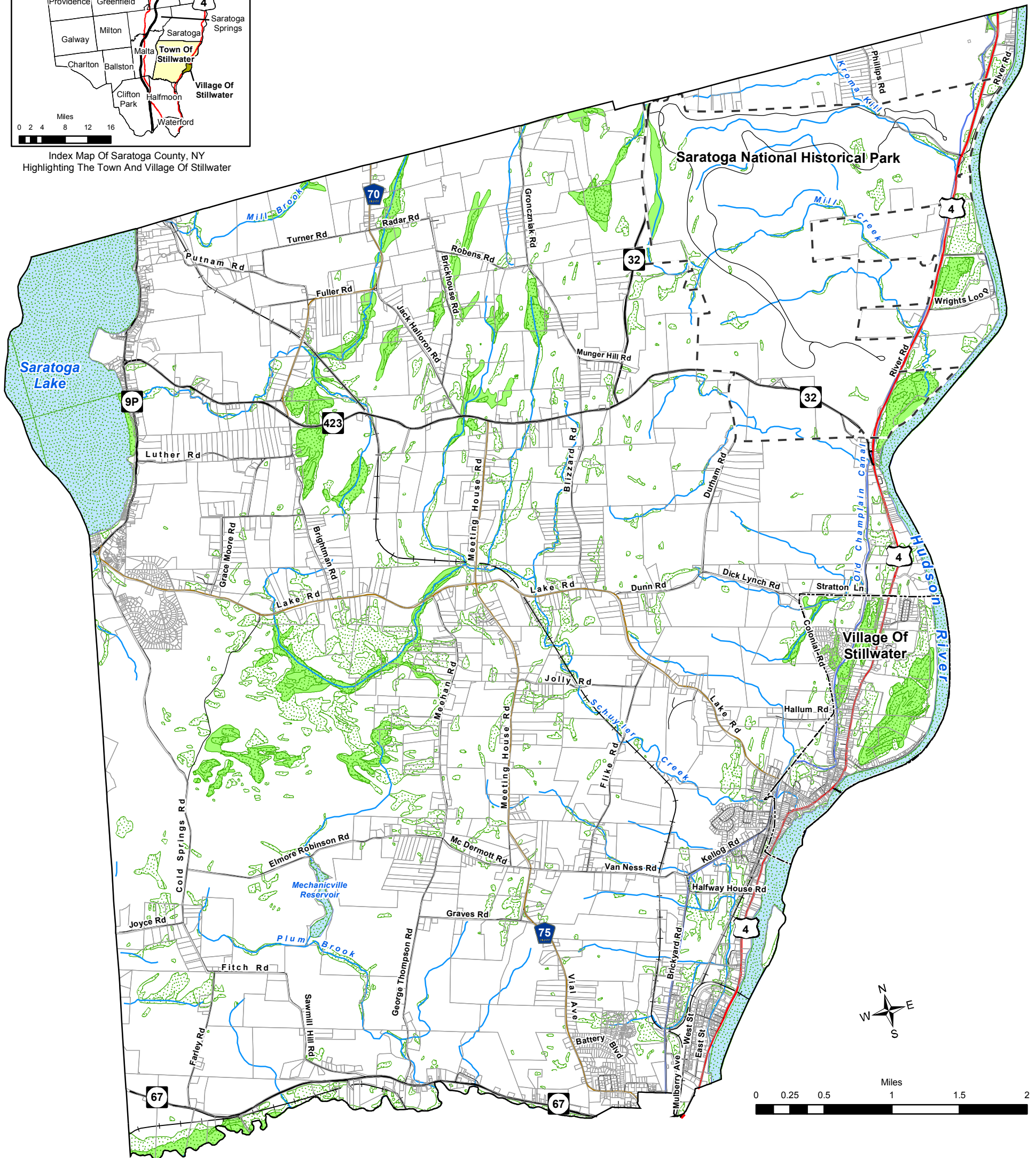


Index Map Of Saratoga County, NY
Highlighting The Town And Village Of Stillwater



Data Sources:
Tax Parcels - Saratoga County Office Of Real Property Services, 2005.
NYSDEC wetlands are based upon mapping completed in 1994.
USFWS NWI wetlands are based upon mapping from aerial photos taken in 1986. Wetland boundaries are subject to field verification and change by regulatory agencies.

	Parcel Boundary		Railroads
	Saratoga National Historical Park	Roads	
	USFWS NWI Wetlands		U.S. Route
	NYSDEC Wetlands		State Route
	Lakes and Rivers		County Road
	Streams		Local Road



CHAZEN ENGINEERING & LAND SURVEYING CO., P.C.

Dutchess County Office: 21 Fox Street Poughkeepsie, New York 12601 Phone: (845) 454-3980	Orange County Office: 356 Meadow Avenue Newburgh, New York 12550 Phone: (845) 567-1133	Capital District Office: 547 River Street Troy, New York 12180 Phone: (518) 273-0055	North Country Office: 110 Glen Street Glens Falls, New York 12801 Phone: (518) 812-0513
---	---	---	--

This map is a product of The Chazen Companies. It should be used for reference purposes only. Reasonable efforts have been made to ensure the accuracy of this map. The Chazen Companies expressly disclaims any responsibilities or liabilities from the use of this map for any purpose other than its intended use.

Town And Village Of Stillwater Joint Comprehensive Plan

Wetlands

Town And Village Of Stillwater
Saratoga County, New York

Created by:
CLC

Date:
12/15/2005

Scale:
1:48,000

Project #:
30401.12